



**Cassa
Edile
Awards
2022**

**Cia
Crispiane**

...continua a far volare la
differentiati

Fire Showroom



Esplora

DIGITAL TOUR by
Dimensione3.com

**LIGHTSYMPOSIUM
Copenhagen 2022**

21-23 SEPTEMBER

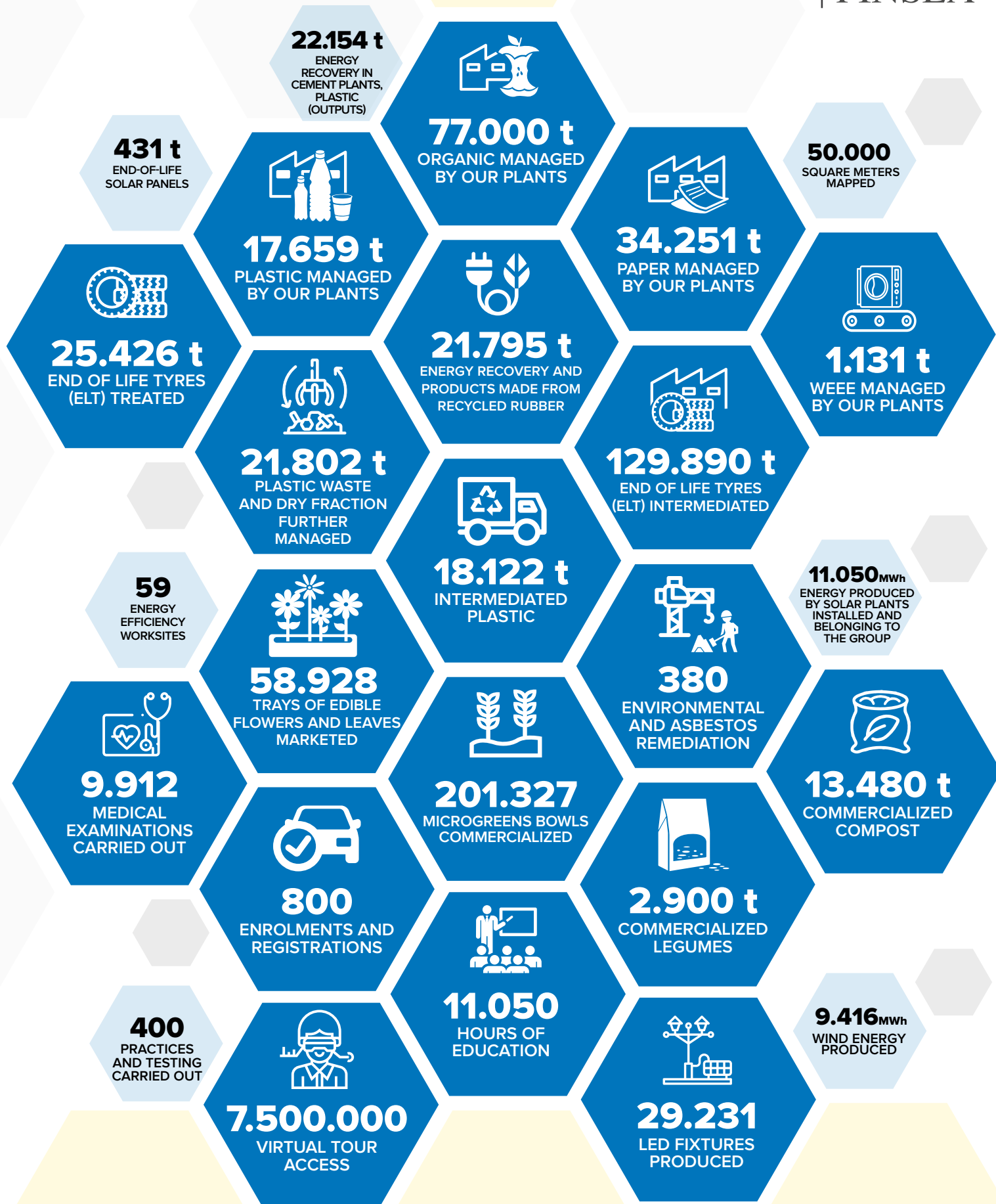
RE-THINKING
LIGHTING DESIGN
A SUSTAINABLE
FUTURE

**CORSO
SICUREZZA
LAVORATORI**

...e gli strumenti necessari alla
sicurezza di lavoratori, caratteristici di
del settore ATCO (artigianato)
e lavori di rischio.

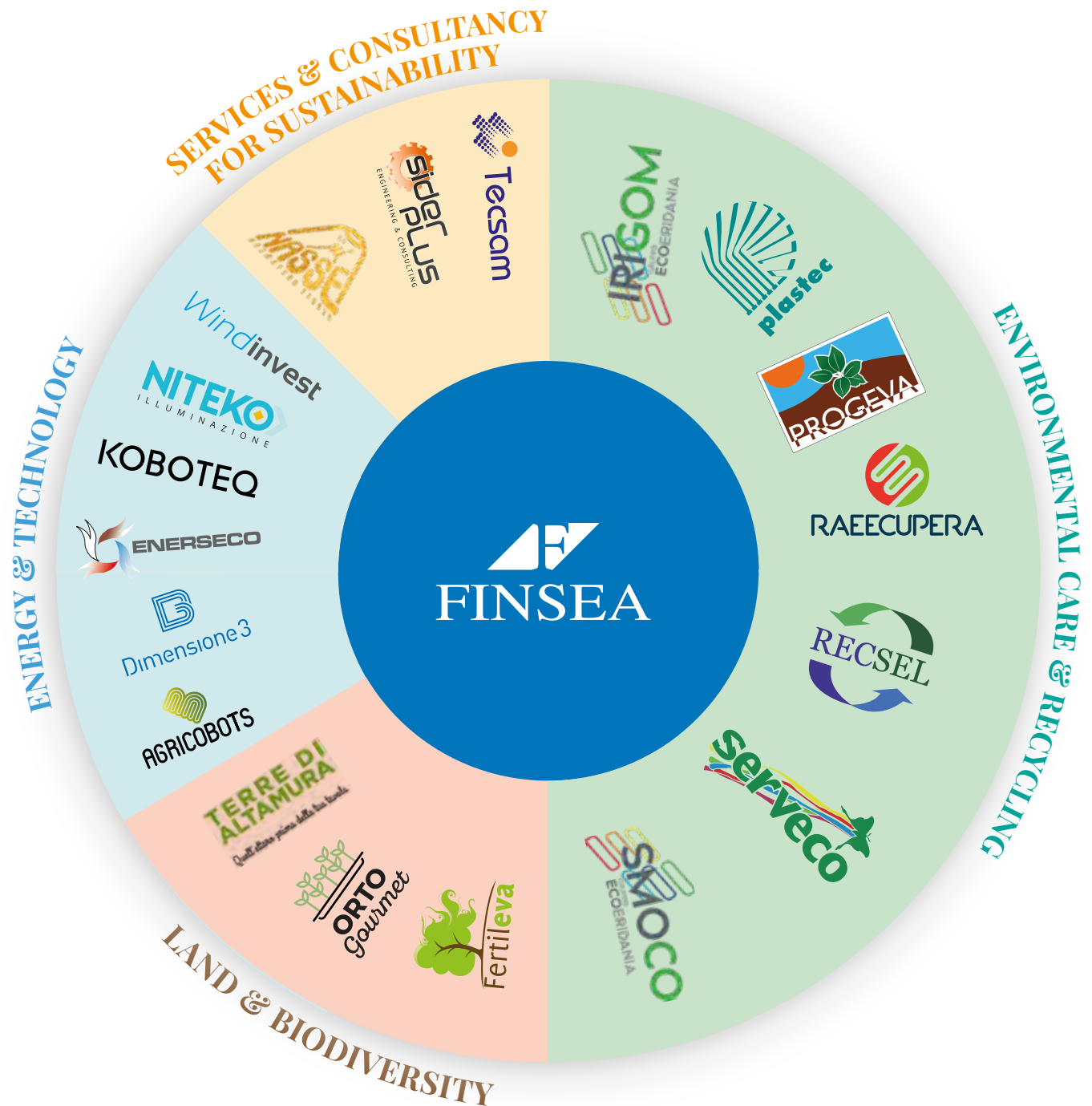
Stefano Cialani

Year 2022: Finsea Group data



We want to bring innovation and change in everything we do to give everyone the opportunity to live a better present and future

Since 1999, the Finsea Group has been an ecosystem of companies operating in the fields of ecology and recovery, land and biodiversity, energy and technology, and sustainability consulting services. The Group's companies protect the planet's resources and promote sustainability practices through the management of environmental services, from the remediation of contaminated sites to the management of urban and industrial waste, which is recovered through selection and recycling plants. The Group is committed to producing sustainable energy and low-impact environmental technologies, confirming its attention to sustainability principles. Thanks to its expertise, it helps public and private customers achieve their goals in a healthy and sustainable way.

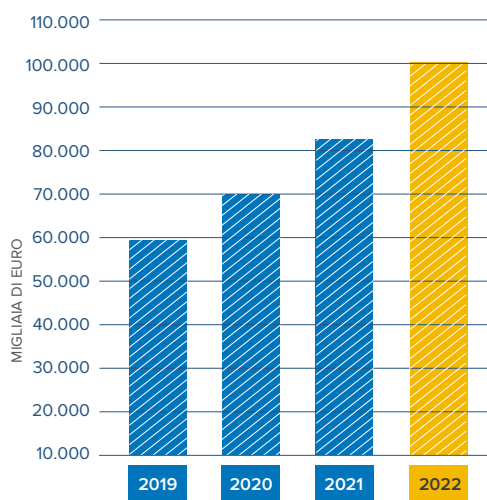


Year 2022: Finsea Group data



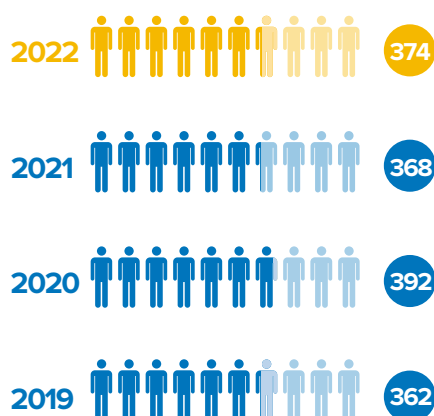
4 SECTORS <ul style="list-style-type: none"> • Environmental care & recycling • Land & biodiversity • Energy & technology • Service & consultancy for sustainability 	19 COMPANIES <p>Sharing the principles of economical, environmental and social sustainability</p>	100 TURNOVER <p>Milions euros</p>	374 WORKFORCE <p>Collaborators</p>
--	---	---	--

Last 4 years turnover



[Source: administration and finance office]

Workforce



[Source: Human resources office]

Life Cycle Assessment

For us, being sustainable within our company walls is not enough. Climate change does not respect territorial boundaries or differentiate between latitudes, geographies, or affiliations. That's why we've decided to carefully monitor our production and service processes "to" and "from" the environment, considering inputs such as water, energy, land, chemicals, and labor and outputs such as soil erosion, biodiversity loss, contamination, greenhouse gases, particulate matter, and resource consumption.

The LCA approach - Life Cycle Assessment - has allowed us to examine the impact of our business activities and has presented us with new questions and challenges.

Our sustainability concept is based on assuming responsibility rather than trying to limit damage.

To quantify our impact on the environment, we have added **environmental debts**, generated by the impact/work of each company, to **environmental credits**, related to the impacts avoided by the renewable energy of our systems or by the material recovery of our plants. Together, our companies have been able to generate more environmental credits than environmental debts.

The good sharing, recovery, and sustainability practices put in place by Finsea Group companies have improved the overall impact performance, offering a decidedly sustainable final result.

In 2021, the Finsea Group generated an environmental balance of 884 people.

As shown in the table below, in **2021, the environmental debt** (impact) generated by our activities was **2.309 person.year***. At the same time, thanks to the recovery activities of our plants and the wind and photovoltaic energy produced by our systems, we generated a **credit equivalent to 3.194**

person.year. In 2021, not only was Finsea's overall environmental debt canceled, but an environmental balance was generated, which compensates for the **emissions of 884 people**, significantly improving the performance of 2020 (354 people).

ENVIRONMENTAL FOOTPRINT OF FINSEA GROUP

ENVIRONMENTAL FOOTPRINT IN PERSON.YEAR		2021	2020
A	TOTAL ENVIRONMENTAL DEBT / PRODUCT IMPACT (total amount of impacts of individual companies)	-2.309,85	-2.006,52
	ENVIRONMENTAL CREDIT		
	Photovoltaic energy produced by Tecsam and Niteko	0,13	2,33
	Wind energy produced by Serveco	195,71	214,33
	Products recovered by Irigom	1928,38	1279,19
	Products recovered by Progeva	297,61	85,50
	Products recovered by Raecupera	98,66	156,03
	Products recovered by Recsel	673,29	623,74
B	TOTAL ENVIRONMENTAL CREDIT / AVOIDED IMPACT	3.193,78	2.361,11
(A+B)	ENVIRONMENTAL BALANCE IN PERSON.YEAR	883,93	354,6

* person.year: used as a unit of measurement and is equivalent to the average environmental impact caused by the activities of a single European person in a year. Activities refer to normal activities of a person: food, transportation, purchases, etc.

This path allows us to give value to our entrepreneurial action, not only from an economic point of view but also from an environmental and social perspective with awareness to implement improvement actions for a sustainable future



View our LCA online and download the complete document.





TOWARDS THE FUTURE

AGRICOBOTS operates in the mobile robotics sector for agriculture 4.0.

Our robots are **available:**



- ▶ with internal combustion, hybrid or full-electric power systems
- ▶ for row crops in greenhouses or open fields
- ▶ an innovative autonomous driving system
- ▶ for flat, sloping or hilly terrains

Core business



Agricobots produces agricultural robots with an innovative autonomous driving system capable of efficiently and safely replicating human work.

Areas of work:

Our machines, which are silent, hybrid or electric, and compact, find application in the agricultural sector for row crop cultivation in greenhouses or open fields.



Advantages

- ▶ Higher efficiency
- ▶ Cost reduction
- ▶ Optimization of work output
- ▶ Reduction of pollution

The right
configuration
for each
application



Tracks and wheels



Radio-controlled



Autonomous driving



SMART SOLUTIONS DEVELOPMENT

Real-time updates

- Real-time control of work status and any alarms
- Complete management of start/stop commands
- Archivable work reports
- Complete technical assistance, even remotely

Safety equipment

- Certified anti-collision radar
- Anti-collision stop device
- Manual emergency button
- Satellite monitoring of the path

Autonomous driving system

- IMU navigation system with 3D inertial sensor
- Proprietary RTK GNSS satellite receiver
- Navigation correction system via remote connection



Legal head office
Via Tanaro, 13/A
20017 Rho (MI)
Italy



Operations office
Viale della Libertà, 8
74020 Montemesola (TA) - Italy
Tel. (+39) 099 567 12 19
Fax (+39) 099 567 11 12



VAT: IT12473320963



www.agricobots.com
info@agricobots.com
agricobots@pec.it



Dimensione3



LIMITLESS VIRTUAL EXHIBITS

DIMENSIONE3 is an innovative SME specialized in tridimensional technologies and offers solutions for marketing applications, architecture and construction industry

DIMENSIONE3 SRL

The Company, registered as innovative startup in 2014 has developed its own market by focusing on innovation and quality, securing a customer base of over 400 companies in Europe, representing many well-known brands over 20 countries.

Virtual reality

Virtual reality technologies, initially focused on applications business for the furniture, nautical, architecture and construction sectors, today are expanding to the industrial world in the field of education and assistance, with a perspective also oriented towards 4.0 industry.

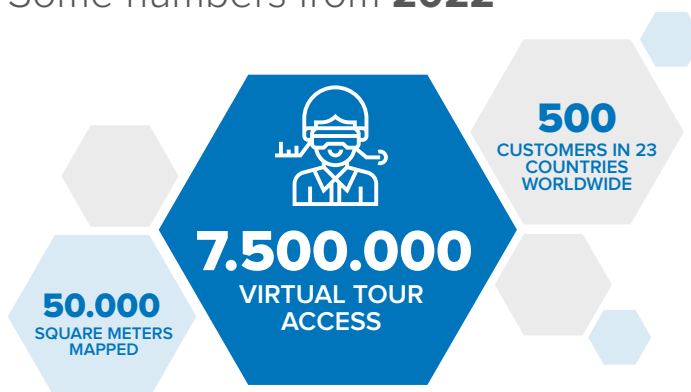
The continuous development of software solutions led the company to launch, in 2022, its applications in the Matterport marketplace, the world leader platform in virtual reality.

Digital tours of real spaces

Digital tours allow to amplify the exposure of any space. With this solution you can virtually and remotely visit one real space, with such fine detail it feels like be present in the observed environment. Digital tours transform one physical space in a digital environment and allow you to take advantage from the power of the web to obtain a no limits exposure of space and time. Photo digital tours are a teleportation in environments such as showrooms, exhibition stands, yachts, hotels, resorts, restaurants, prestigious properties, museums and galleries, construction sites, company headquarters, productions.

Dimension3 realized over 700 digital tours in Europe for well known Brands in the furniture, nautical and tourism sectors.

Some numbers from 2022





Augmentours

We can augment our 3D tours with virtual objects inserted into the real scene.

DIGITAL PHOTO TOURS

Let's go to reality.

In a real environment as far beyond the limits of reality because object signs record

Photo tours are "augmented" with virtual interactive elements, 3D objects, multimedia elements such as video, audio, etc. Thanks to its own software, Dimensione3 can enrich the virtual tour with infinite possibilities of content, creating an effective experience, original, personalized, suitable for many sectors and applications.

The augmented tour increase the effectiveness of the visit, they orient the visitor, add details, information and emotional impact.

Thanks to the augmented tours solution, Dimensione3 is developing a line of research aimed at provide solutions to 4.0 industry.

Rendering tour

Tour renderings show spaces designed in computer graphics that do not really exist, with a virtual tour that allows to observe the environment in all its details, finishes, furnishings, lights. To visit a rendering tour is not necessary any software, is enough internet connection and any device mobile or desktop. The digital visitor can walk in virtual space with the feeling of being right there in the environment he is observing. Dimensione3 render tours are a solution suitable for the construction and nautical, and also furnishings fields. Dimensione3 3D technologies aimed at the world of architecture and

construction provide a series of advantages in the way of developing projects.

Scansioni laser

I rilevamenti con il laser scanner consentono di ricostruire lo stato attuale di edifici in formato digitale con grande precisione, ed ottenere dati e misurazioni affidabili per evitare errori di progettazione, aumentando così la redditività dei progetti. Gli output consegnati ai progettisti sono modelli di nuvole di punti e piante tecniche, importabili direttamente nei software di progettazione.

Modelli BIM

Dimensione3 carries out the virtualization and computerisation phases of the building's digital project.

Thanks to the BIM model, the architectural project is managed with a digital model associated with a database.

Dimensione3 realizes the BIM model on new projects or rebuilt on existing buildings, based on the point clouds obtained with laser scans precious for building renovation projects.



DIMENSIONE3 SRL

Legal head office
Via Roberto Rossellini 11/C
70023 Gioia del Colle (BA)
ITALY
Tel. (+39) 080 332 2345



Secondary branch
Via Tanaro, 13/A
20017 RHO (MI) - Italy

Tel. (+39) 02 500 20864



VAT: IT07530260723



www.dimensione3.com



info@dimensione3.com
dimensione3@pec.it





MOBILE ROBOTIC PLATFORMS

KOBOTEQ develops mobile robotic platforms and autonomous driving systems with applications in civil, industrial, and agricultural sectors.

Independent **driving systems**



- ▶ Suitable for internal combustion and electric engines
- ▶ For indoor and outdoor applications
- ▶ With innovative autonomous learning system

Your **turnkey ideas**



- ▶ Feasibility analysis
- ▶ Design and implementation of prototypes
- ▶ Mass production

Core business



Koboteq transforms radio-controlled vehicles into innovative autonomous vehicles capable of replicating human work efficiently and safely.

Areas of application:

Our robotic platforms, silent, electric, and compact, find application in the industrial and security sector, for indoor and outdoor environments.

Mobile **robotic platforms**



- ▶ On tracks and wheels
- ▶ Radio-controlled
- ▶ Autonomous driving



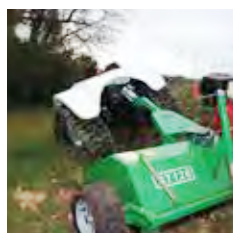
SMART SOLUTIONS DEVELOPMENT

For home automation, virtual reality,
and intelligent mobile robotics
systems.



X-BOT

Xbot, a powerful and robust tracked mobile robot capable of tackling any type of terrain and can be used for rapid prototyping for robotics or mechatronics projects, as well as for a wide variety of applications such as remote monitoring and exploration of hard-to-reach places.



Tracks offer superior traction and stability compared to wheeled mobile robots.



RoteBox

Rotebox is a universal onboard computer capable of transforming radio-controlled vehicles into innovative autonomous driving robots capable of perfectly replicating work in a safe, efficient, and profitable way.



Solarino

has a new name: it's now called BeBot.

Our technology is implemented by the "clean tech" range of PORALU MARINE The Searial Cleaners.



Legal head office
Via Tanaro, 13/A
20017 Rho (MI)
Italy



Operations office
Viale della Libertà, 8
74020 Montemesola (TA) - Italy
Tel. (+39) 099 567 12 19
Fax (+39) 099 567 11 12



VAT: IT12448630967



www.koboteq.com
info@koboteq.com
koboteq@pec.it



LED LIGHTING

We are an Italian manufacturer of green technology: we design and produce LED lighting fixtures for streets, urban spaces, large areas, and sports facilities.

Our new headquarters is nearly zero energy (NZEB), and our production cycle aims to reduce energy and material waste. We also experiment with 100% recyclable materials.

NITEKO SRL

We study custom solutions with photometrics, power configurations, color temperatures, and RAL of the product that exactly match the specific requirements. We also design retrofits to convert historical and artistic street lamps to LED.



29.231
LED LAMPS
PRODUCED



STREET LIGHTING

We go beyond standard optics to increase safety levels. To reduce the risk of accidents on our roads due to poor visibility or glare and increase visual comfort and well-being for everyone, the right street lighting is necessary. We offer two series of lamps for different street applications in design, both performing and compatible with all smart-city systems on the market.



SPORTS AND ARCHITECTURAL LIGHTING

Our experience allows us to illuminate sports facilities for both amateur and professional use, as well as facades of buildings, museums, and monuments, balancing optical efficiency, energy savings, and design in the best way possible.



RETROFIT APPLICATIONS

We study and propose custom solutions in the field of retrofitting and Ideal fixing systems to modernize cities. URBAN KIT is the retrofit system adaptable to any existing fixture, even recessed. The ideal solution to modernize cities while preserving the cultural value of historical street lamps.





LORELUX

LONG
RESISTANT
LUMINAIRES

Lorelux® comes from the awareness that combining technology and innovation with sustainable and recyclable plastic materials can provide a uniquely designed urban lighting able to last for over 50 years.

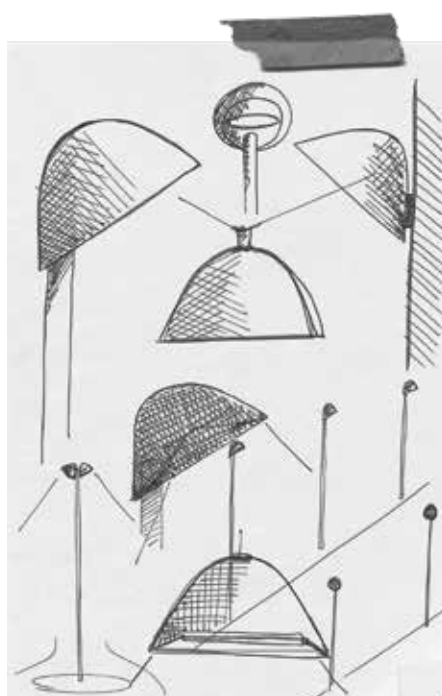
Creating from recycling, valuing through reuse

Lorelux lamps can also be made from second-hand raw materials using production waste or post-consumer selected polyethylene from separate waste collection. To make a Lorelux lamp from second-hand raw materials, about 2.5 kg of plastic bottle caps are used.



Unlimited freedom of expression

Thanks to the flexibility of biopolyethylene material and rotational printing technique, this series of lamps can be created in any geometric shape, overcoming the obstacles of traditional technology.



Indestructible lamps

This brand is characterized by its extreme durability over time even in the presence of environmental adversities. The lamps are immune to corrosion, discoloration, and acts of vandalism. They are ideal for installation in historic centers, squares, and public green areas, especially in highly polluted cities or those close to seas, rivers, or lakes.



Legal head office
Zona PIP, Viale della Libertà, 8
74020 Montemesola (TA)
Italy



Tel. (+39) 099 567 12 19
Fax (+39) 099 567 11 12



VAT: IT02867530731



DIN EN ISO 9001:2015
1040815-01



DIN EN ISO 14001:2015
1040115-01



RoHS



www.niteko.com
info@niteko.com
niteko@pec.it

www.lorelux.eu
info@lorelux.eu



We take care of the Planet and its resources to offer to each citizen
clean and renewable energy

ETICHS & BUSINESS

Ethics is the basis of the technical, economic and financial solutions addressed to customers that could benefit from our consultancy and be helped during the plant development and even after.



SCAN THE CODE TO SEE OUR COMPLETE COMPANY PROFILE

NEW ENERGY MODEL

Aware that the future of the Earth and the well-being of its inhabitants depend on the availability of energy and on our desire to preserve the environment, Serveco Energia is committed to developing an alternative energy model, spread and sustainable, based on renewable energy sources and on the smart use of energy.

Certifications



CODE OF ETHICS



D.LGS. 231/2001

Serveco is an Energy Service Company (E.S.Co.) with UNI CEI 11352 certification issued by DASA-RAGISTER Spa and has two experts in energy management (EGE) certified UNI-CEI 11339 on staff.

Memberships



Recognitions

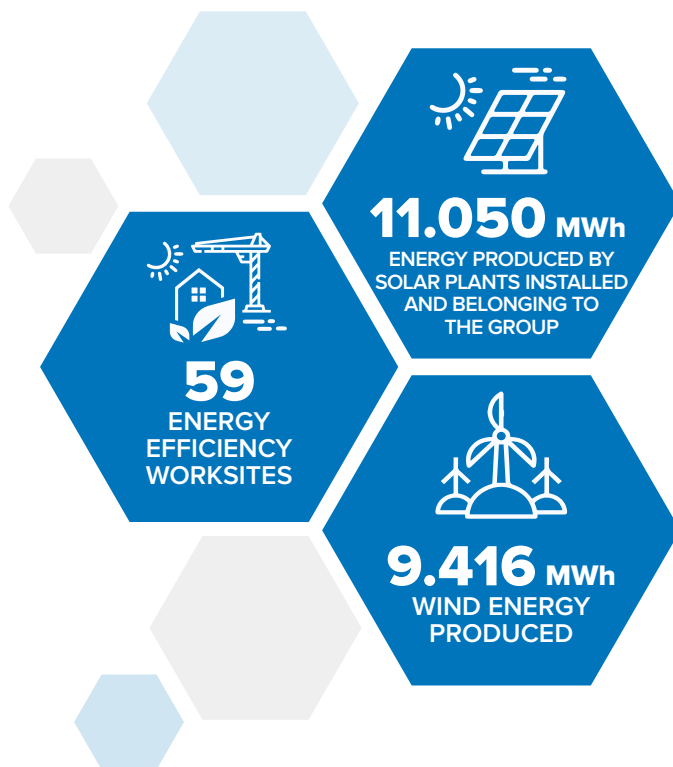


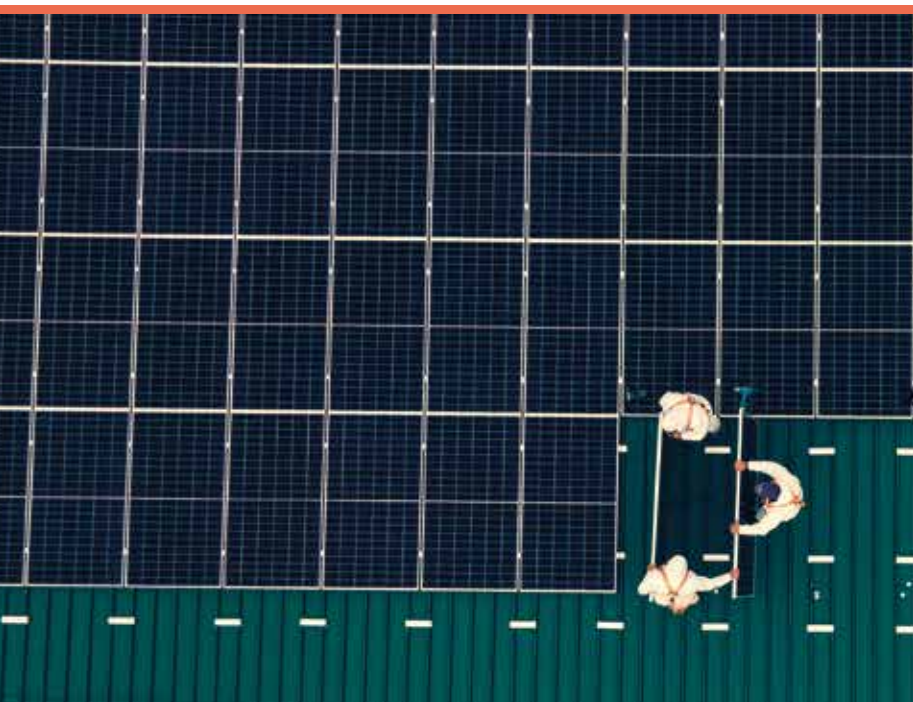
In 2021 and 2022, Serveco received recognition promoted by the Edile Fund for the "Dream team" and "Fair play" categories.



In 2022, Pierino Chirulli and Carmelo Marangi received a special mention at the Ecoforum of Legambiente Puglia for being pioneers of the circular economy.

Some numbers from 2022





ENERGY EFFICIENCY RENEWABLE ENERGIES

Serveco offers solutions aimed at the energy saving and renewable energy use, also resorting to the stipulation of contracts with guaranteed benefits using, in some cases, the formula of financing through third parties or the transfer of the building bonuses or the thermal account.



Energy saving

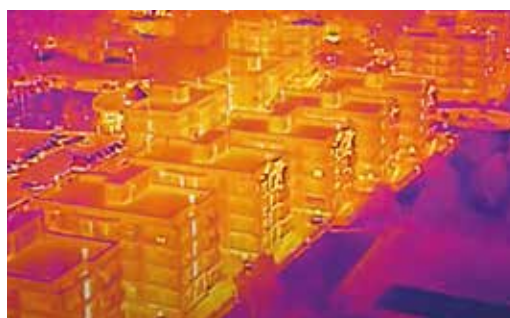
Energy saving interventions and in particular:

- Replacement of electrical engine with others more energy efficient
- Led lighting
- Thermic insulation
- Co-trigeneration

Energy from renewables

Energy produced by renewable resources through planning, installation and management of plants:

- Thermic solar and photovoltaic
- Eolic
- Biomasses
- Geothermal
- Biogas
- Heat pumps



Energy consultancy

Together with these activities and with the suitable equipment, Rienergia provides its Know how and expertise for:

- Energy audit
- Consultancy and preparation for funding applications
- Consultancy for energy efficiency certificates
- Energetic Diagnosis, requalification and



certification of plants, buildings and sites

- Technical training for designers, installers and others sector's professionals.



Legal head office
Zona PIP - Viale delle Imprese, 3
74020 MONTEMESOLA (TA)
Tel +39 099 567 11 11
Fax +39 099 567 11 12



Operations office
Via Tanaro, 13/A
20017 RHO (MI)
Tel +39 02 25 13 8915



Operations office
Via Gallarate, 50
21045 GAZZADA SCHIANNO (VA)
Tel +39 0332 974 779



VAT:
IT00788970739



www.serveco.it
serveco@serveco.it
serveco@pec.serveco.it

